

Thinking About 1660 Linc?

1660

ONE WAY

1660 Lincoln St
Denver, CO 80264

 TRANSWESTERN[®]

**1660
Linc**
Denver, CO 80264

Prepare to Be Convinced.



1660 Linc is a modern yet comfortable building for traditional firms and tech companies alike. We've purposefully programmed the building's lobby to be user-friendly and memorable for visitors strolling by. 1660 Linc is even pet-friendly!

300,000 RBA

Located in the heart of UpDo.

New Fitness Facility

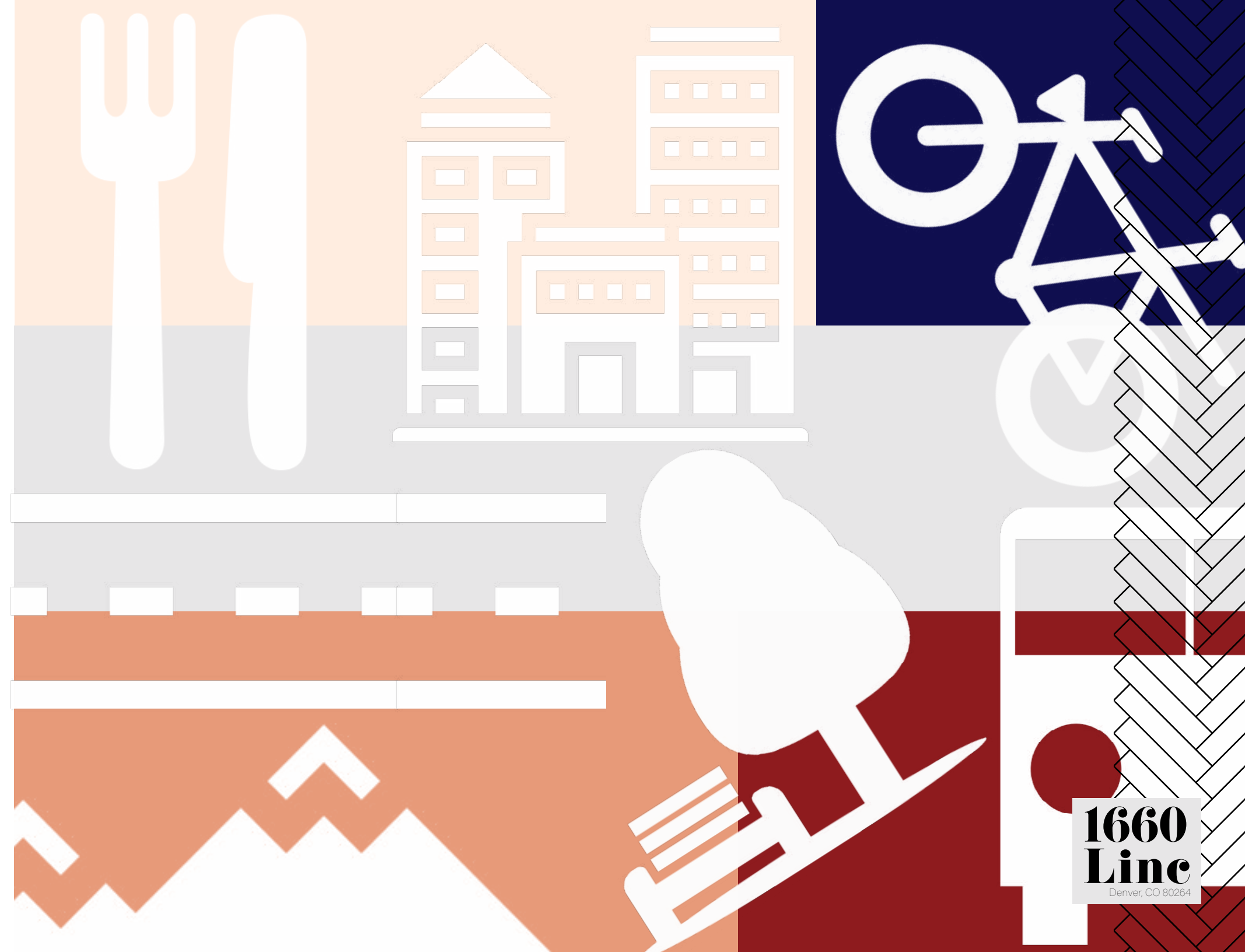
With Peloton bikes galore, showers & lockers.

1.4:1,000-SF

On-site parking garage with easy transition elevators.

15,000-SF Floorplates

With many available spec suites.



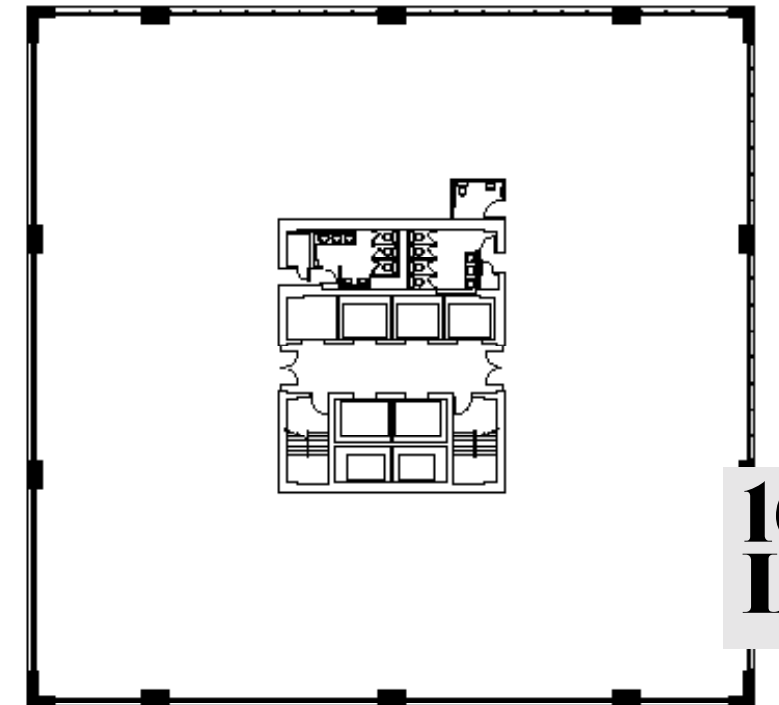
**1660
Linc**
Denver, CO 80264

Linc to Views From Above.

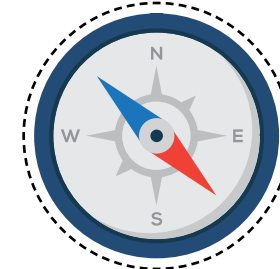


It's a bird, it's a plane, it's 1660 Linc! Whether you are seeking to impress clients with walnut and stone finishes or you are a tech company looking for spiral ducting and polished concrete, these penthouse views can't be beat!

Floor 30-15,362 RSF (column free)



Mountains
& Urban Core



State Capitol Dome
& Broadway

Mountains
& Coors Field

Treetops of City Park
& Urban Neighborhoods

**1660
Linc**
Denver, CO 80264

Line to Functional & Inviting Lounge Area.

Oz Architecture, an award-winning Colorado design firm, has proposed an 8,800-SF tenant lounge featuring an organic getaway, training room for 40+ people, patio seating and a local coffee bar. An engaging outdoor mural will carry through the tenant lounge as a vertical icon. Familiar security personnel greets tenants and guests alike upon arrival.



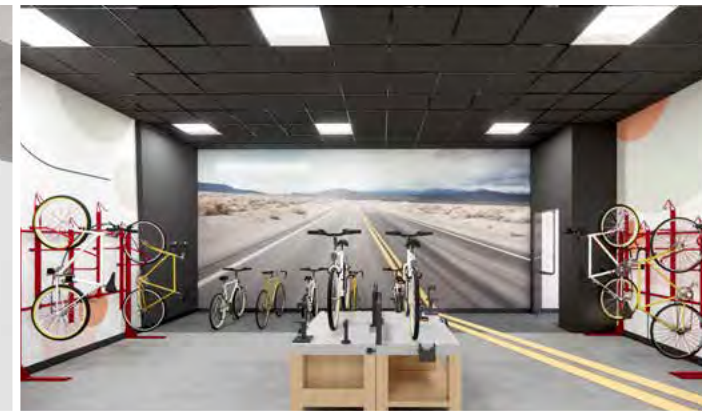
Ground Floor Tenant Lounge

- Light & Bright Lobby with Natural Finishes
- Tonal, Upscale, Refined, Modern and Playful
- New Bike Storage
- Yoga Studio on Floor 2
- \$750,000 Tenant Lounge Investment Planned in 2020



NOT TO SCALE

**1660
Line**
Denver, CO 80264

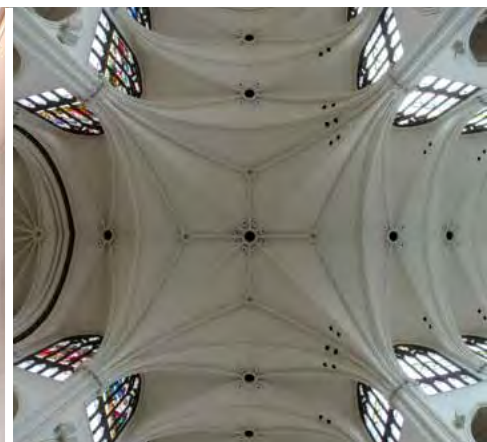
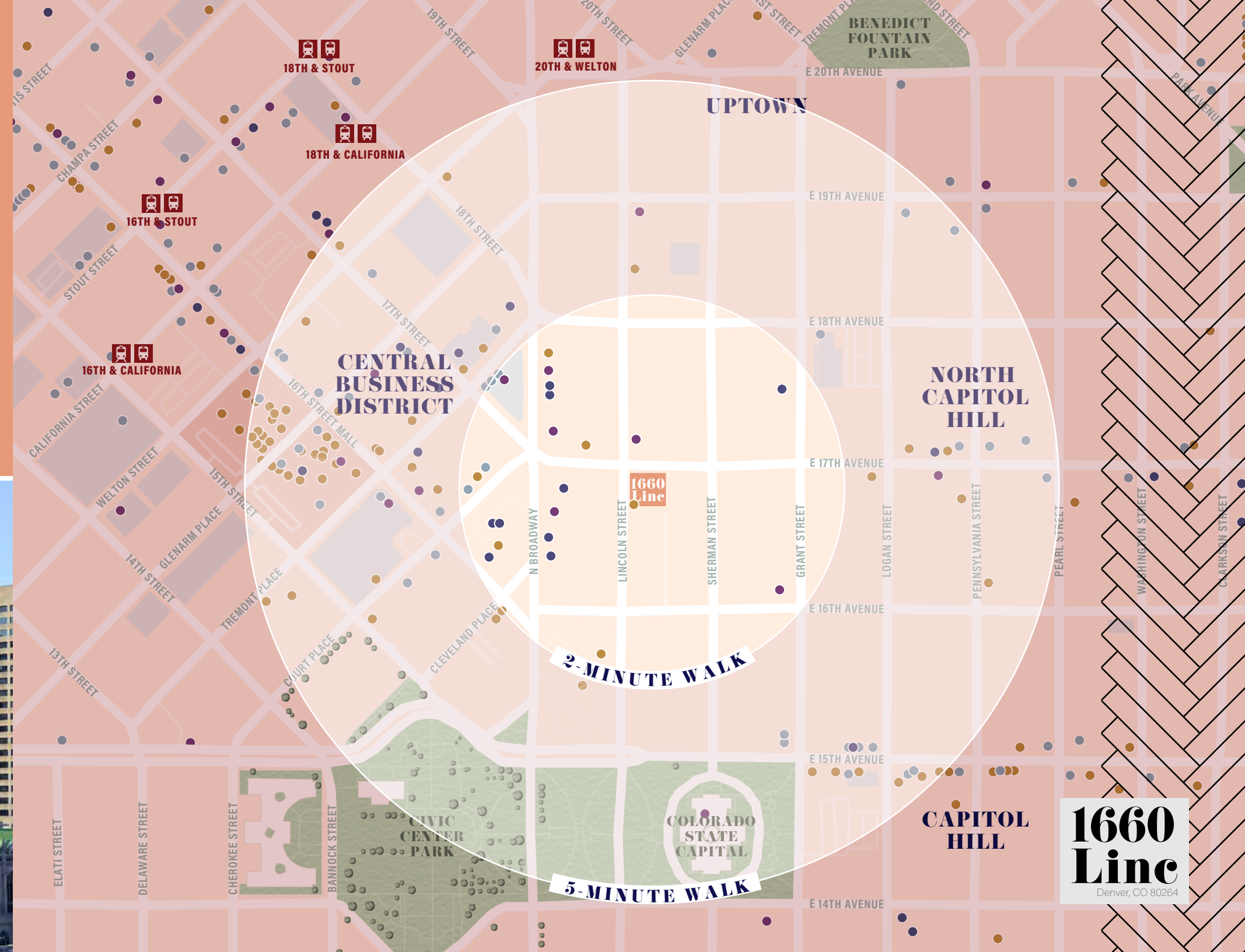


Line to Iconic, Historic Downtown.

1660 Linc is strategically located at the convergence of Uptown and Upper Downtown districts. Both districts have iconic history, Uptown mansions are architectural treasures and Upper Downtown sprung from the Rocky Mountain gold rush. Today, hip vintage culture collides with modern amenities outside of 1660 Linc.

Map Key

- Hotels
- Coffee
- Restaurants
- Shops
- Banks/ATMs



**1660
Linc**
Denver, CO 80264

Line to Multi-Modal Access.

Did you know that 33% of employees in Downtown Denver use alternative means of transportation to commute to work? 1660 Linc embraces commuters of all kinds, from road warriors, to pedestrians living nearby and cyclists. There are many easy routes to navigate in and out of 1660 Linc and lots of swanky destinations to visit in UpDo.



91

Transit Score

98

Walk Score

90

Bike Score



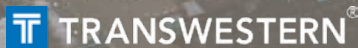
1660 Linc
Denver, CO 80264

Your Line to It All.



WHITNEY HAKE
whitney.hake@transwestern.com
303.601.6465

BILLY WOODWARD
billy.woodward@transwestern.com
303.952.5591



**1660
Line**

Denver, CO 80264